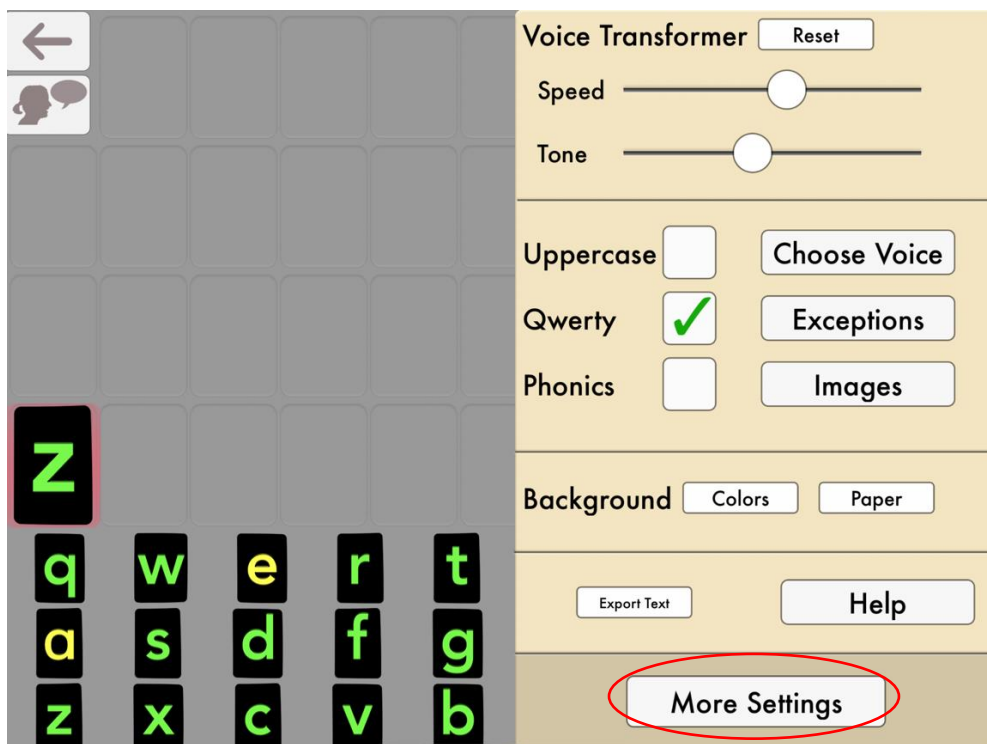


Removing access to some letter keys in Word Wizard

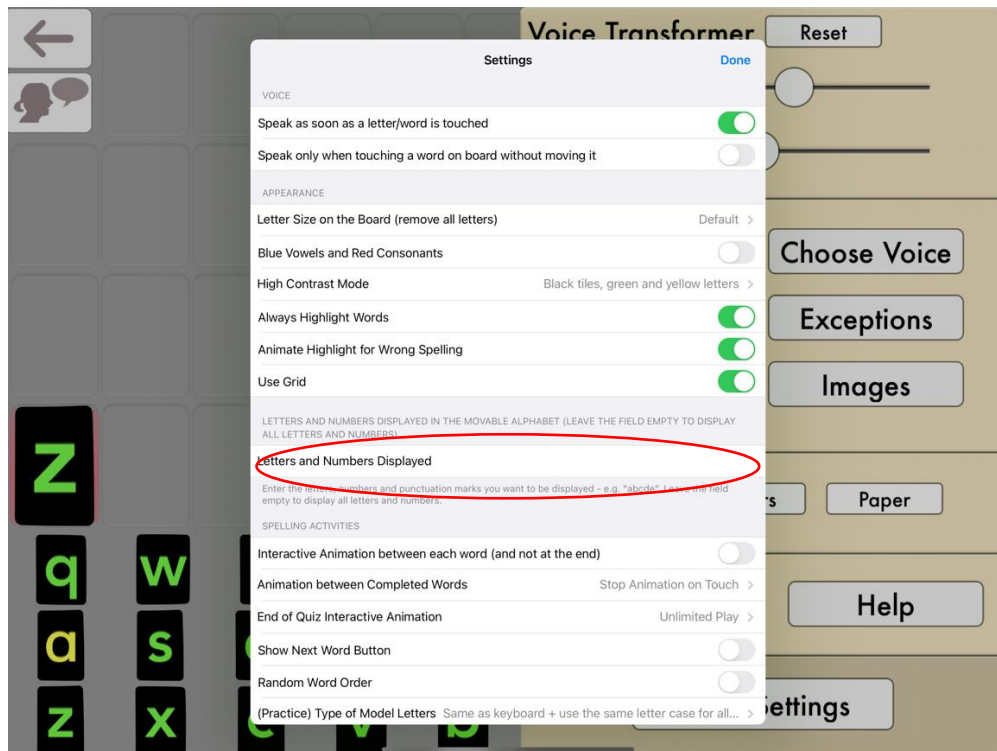
1. Open Word Wizard app
2. Press the Settings button to open the app settings. (Settings button is circled in red on the picture below.)



3. Now press More Settings (circled in red below) to get to the second page of settings for the app. (And on your way through, make sure that QWERTY is selected. We want all students to be using QWERTY keyboards, not ABCDE ones, so they can develop motor planning for the QWERTY keyboard.)



4. On the next settings screen, type a list of the letters you want displayed. For a student who is very keen on alphabetic order, you might type a list like bcdefghijklmnoprstuvwxyz – missing just a few letters from the alphabet.



5. Now press "Done" in the top right corner of the settings window. Then tap outside of the second settings window to close it down.

Have fun Word Wizarding!!!!